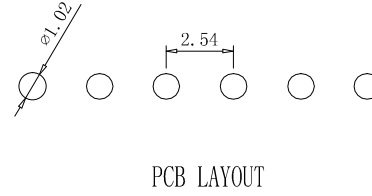
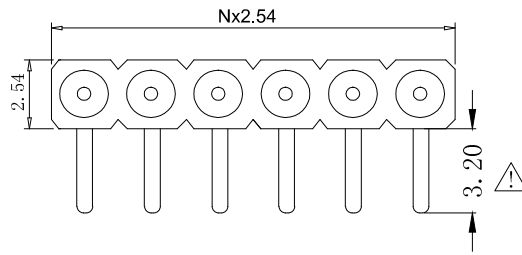
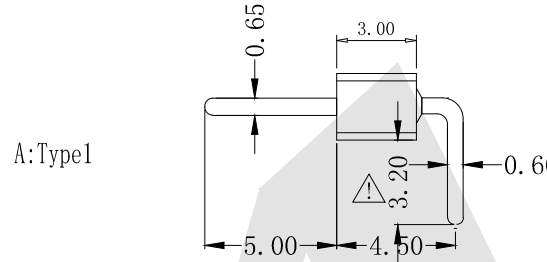


HSF

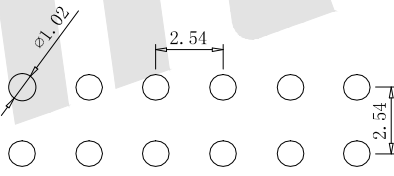
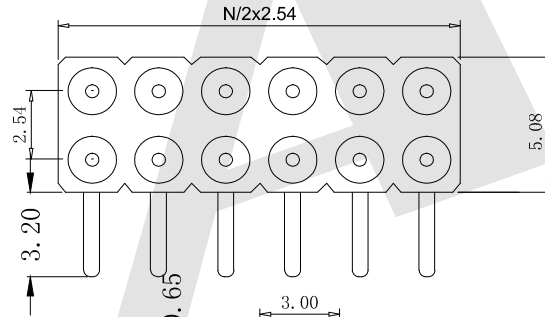


PCB LAYOUT

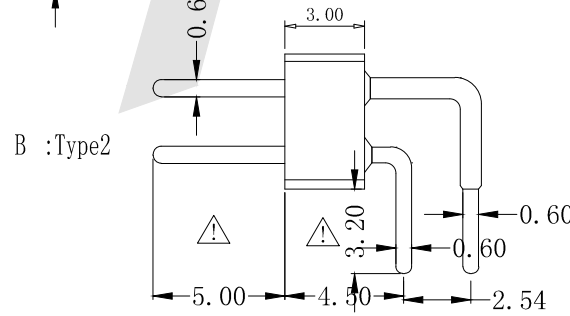


A:Type1

Right angle pin connector:solder tail,
single row
Availability from:2 to 40 contacts
Standard number of contacts 20,
25,32 and 40



PCB LAYOUT



B :Type2

Right angle pin connector:solder tail,
double row
Availability from:4 to 80 contacts
Standard number of contacts 20,
40,56,60 and 72

SPECIFICATIONS:

Insulator: PPS
Flammability: UL 94V-0
Sleeve: Brass
Mating pin ϕ : 0.47 mm
Mechanical life: min 500 cycles
Rated current: 3A
Contact resistance: max 10 m Ω
Dielectric strength: min 1000V RMS

Ordering Code:

MPHER - $\frac{X}{1}$ - $\frac{X}{2}$ - $\frac{X}{3}$ - $\frac{X}{4}$ - $\frac{X}{5}$ - $\frac{00}{6}$

- ① MPPER series
- ② Contact NO:
XX=XXpin
For example:
06=06pin
- ③ Pin Plated
0; No
1; Tin 150 μ "
2; Tin 200 μ "
3; G/F
4; Gold 3 μ "
5; Gold 10 μ "
6; Gold 15 μ "
S; Special
- ④ Packing
A:Tray B:Bag
C:Tube D:Tape Reel
- ⑤ Type selection
A:Type1 B:Type2
- ⑥ Series number
00

Unless otherwise specified tolerance
X. ± 0.35 X.XX: ± 0.20
X.X: ± 0.25 X.XXX: ± 0.15

Antenk® ANTENK ELECTRONICS CO., LTD
Http://www.antenk.com
E-mail:sales@antenk.com

| | |
|--------------------|--------------------|
| SCALE: As Shown | UNIT: mm |
| DRAW Wu Sai | DATE 22/03/2018 |
| CHECK BobYang | DATE 22/03/2018 |

TITLE:
Machined Pin connectors 2.54 mm:
MPHER series



DRAWING NO: MPPER-XXXX00
PRODUCT NO: MPPER-XXXX00

⚠ Update Size

06/25/2021

REV

DESCRIPTION

DATE